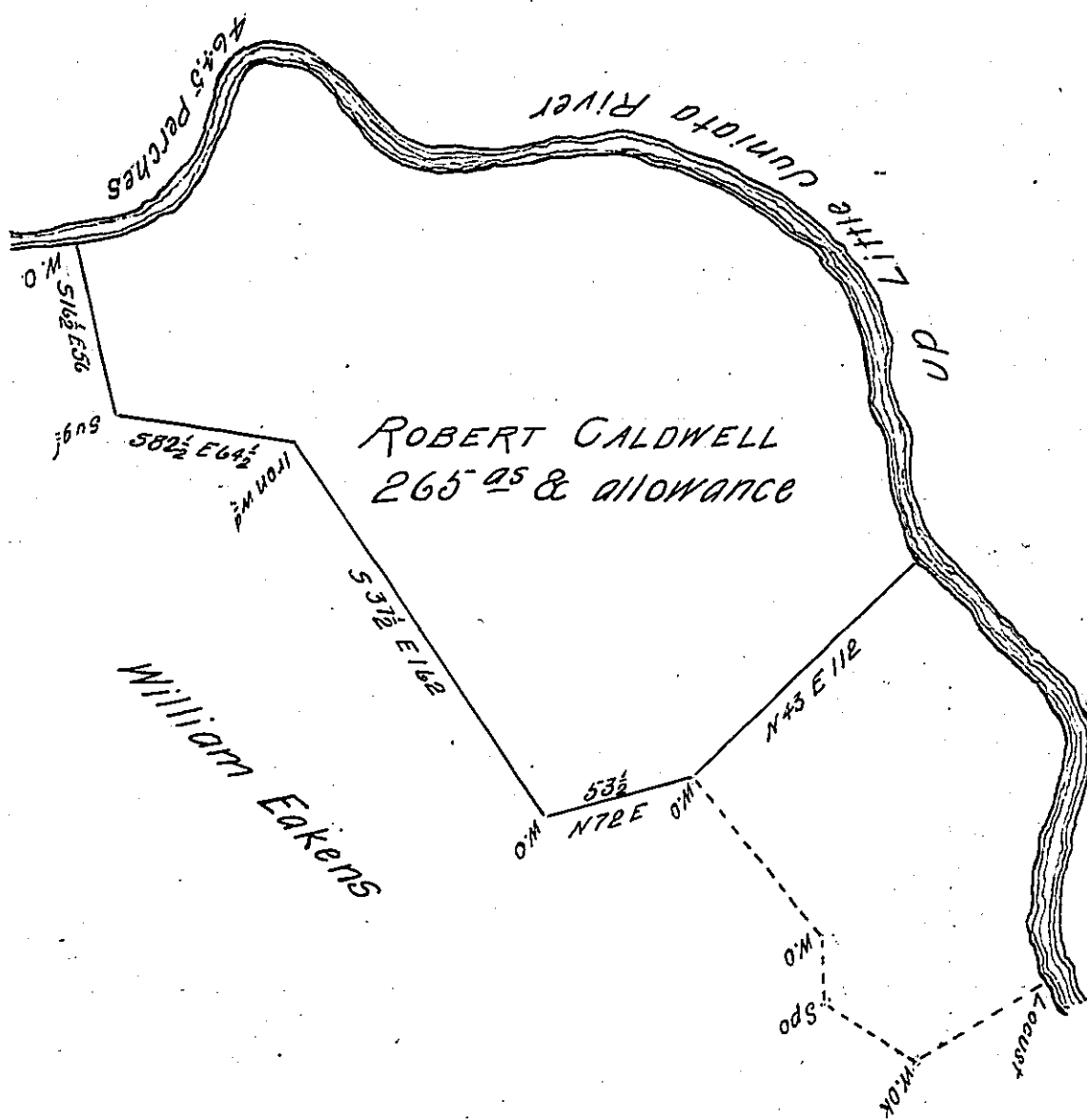


Courses & Dis^t up the River
from B. O.K. to W. O.



- N 33 W 34
- N 15 W 29
- N 17 E 18
- N 20 W 16
- N 40 W 10
- N 50 W 21
- N 50 1/2 W 31
- N 84 W 16
- N 69 W 17
- West 12
- S 85 W 40
- N 73 W 23
- N 65 W 34
- N 43 W 30
- N 74 W 12
- S 75 W 10
- S 5 W 35
- S 43 W 43
- S 25 W 15
- S 84 1/2 W 18.5 to the W.O.K.

Situate in Porter Township Huntingdon County Containing two hundred sixty five acres and allowance of six per Cent first Surveyed the 17th day of October 1770 in pursuance of an order of Survey granted to Robert Caldwell dated August the 23^d A.D. 1766 it then contain^d 310^{ac} and allowance this Part was Resurveyed and Divided from the Residue of the Tract the 29th day of June 1818

Jacob Spangler Esq^t
Surveyor General

Peter Cassidy Depy. S.

IN TESTIMONY that the above is a copy of the original remaining on file in the Department of Internal Affairs of Pennsylvania, made conformably to an Act of Assembly approved the 16th day of February, 1833, I have hereunto set my Hand and caused the Seal of said Department to be affixed at Harrisburg, this eight day of February 1904.

Guac R. P...
Secretary of Internal Affairs.